

A MICHELLE RENÉ COBB SOLO EXHIBITION

# Global Perspectives

ART SHOW CATALOGUE

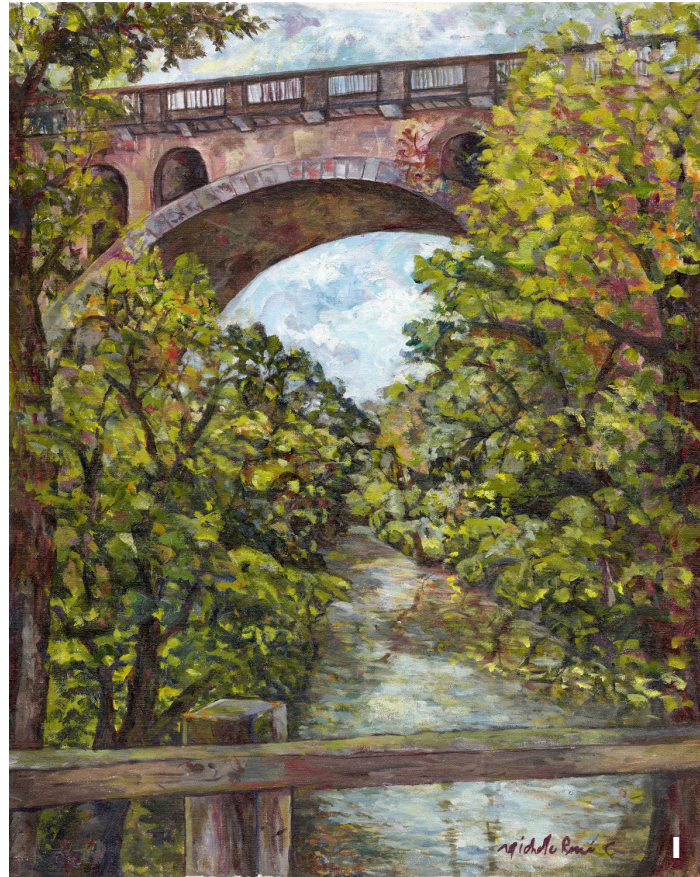


Opening April 17, 2026  
Woman's National Democratic Club  
1526 New Hampshire Avenue, NW  
Washington, DC 20036



“Michelle is wholly committed to the power of paintings ‘in the flesh’, and I watched her convey her technical and art historical knowledge in compelling ways to her students. She and I, on our own, have a real meeting of minds when it comes to painting.”

- Dr. Mary Morton, Curator and Head of French Paintings, National Gallery of Art



**1. The Duke Ellington Bridge**

30" x 40" oil on canvas, Washington, DC

The Duke Ellington Bridge, a majestic landmark in Rock Creek Park, Washington, DC, was re-imagined using the eight colors of Rembrandt's palette to reflect the ambiance of the three seasons.

**2. Art Safari**

18" x 24" oil on canvas, Washington, DC

Art Safari features a mask Michelle carved in Ghana, her diary from her three-month West Africa Art Safari residency, her grandparents' spyglass and sewing box, and an N95 mask symbolizing the historic pandemic.



Painting in Rock Creek Park, Washington, DC



**3. The Ocean Park Yellow House**

30" x 40" oil on canvas, Oak Bluffs, Martha's Vineyard

The famous historical Ocean Park yellow house overlooking the Vineyard Sound

**4. The Gazebo**

16" x 20" oil on canvas, Oak Bluffs, Martha's Vineyard

A summer day at the iconic Gazebo in Ocean Park

**5. Among the Flowers Café**

20" x 24" oil on canvas, Edgartown, Martha's Vineyard

The famous café is situated on the Edgartown waterfront.



Painting in Ocean Park, Martha's Vineyard

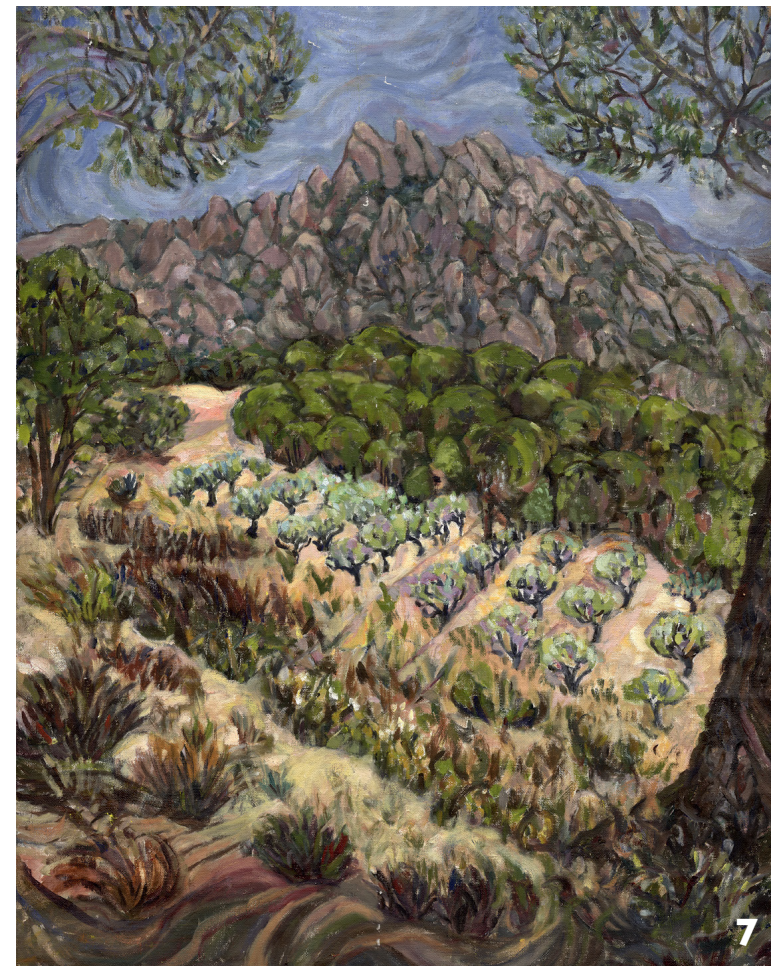




Painting in Spain



6



7

**6. Mountaintop Spain Sunset**

11" x 16" oil on board, El Bruc, Spain

Can Serrat Residency

Michelle René spent more than a month painting the jagged peaks of the Montserrat Mountains near Barcelona, Spain. Upon completion, she turned around and saw this stunning sunset over the village.

**7. Montserrat Mountains**

20" x 30" oil on canvas, El Bruc, Spain

Can Serrat Residency

Climbing this mountain daily, with equipment, to paint this beautiful vineyard and the serrated peaks of the mountains was both rewarding and challenging.

**8. Spain Studio**

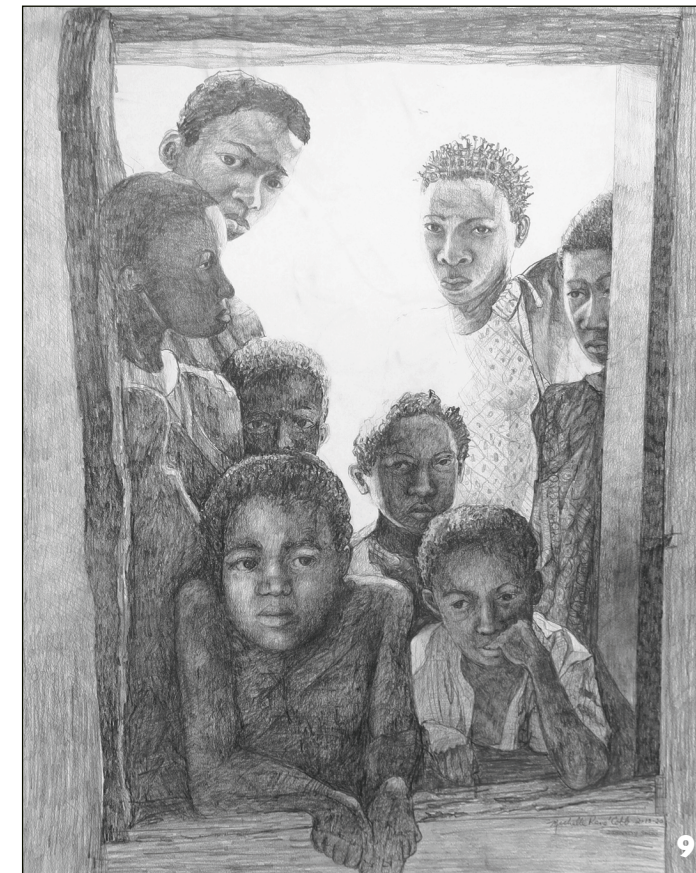
11" x 14" oil on canvas, El Bruc, Spain

Can Serrat Residency

Michelle René was captivated by the way the Mediterranean breezes flowed through the sheer curtains. The morning sunlight reflected off the tiled floor, creating a series of shadows that shifted with the movement of the sun.



8



9



10

**9. The Window**

22" x 28" Fine Art Framed Print, Ghana

In the Ghanaian village of Petoé, known for making the "talking" drums, a ceremony was held inside a hut to test the sound of the drums. Village children peeked through the window, curious about the western visitor attending the ceremony.

**10. Spirit of Blackness**

20" x 22" Limited Edition Fine Art Framed Print

This soft-ground etching is a captivating fine art print that illustrates the spontaneity of childhood and the spirited play of Black children. This piece celebrates the vibrant energy found in a cherished moment of play.



A cold day in Petoé, the Master Drummer and his granddaughter. Michelle René



12

**11. The Master Drummer & His Granddaughter**

16" x 20" Fine Art Framed Print, Ghana

During the Art Safari Residency, Michelle René visited Petoé, a Ghanaian village known for its "talking" drums. On a chilly day, the blind Master Drummer and his granddaughter gathered the village for a ceremonial drum session inside a hut to test the sound of the drums.

**12. Black Kids**

20" x 28" Fine Art Framed Print, Harlem

Black Kids was recently acquired by U.S. Supreme Court Justice Ketanji Brown Jackson for her chambers. The photosilkscreen collage was inspired by Michelle René's students in Harlem and photographs by Gordon Parks.

“Looking and actually seeing is not the same thing. Seeing is a learned thing. It’s not a natural instinct. Once you’ve learned to see, the world will never look the same to you.”

-Edward Loper, Sr.



Painting in Tuscany, Italy



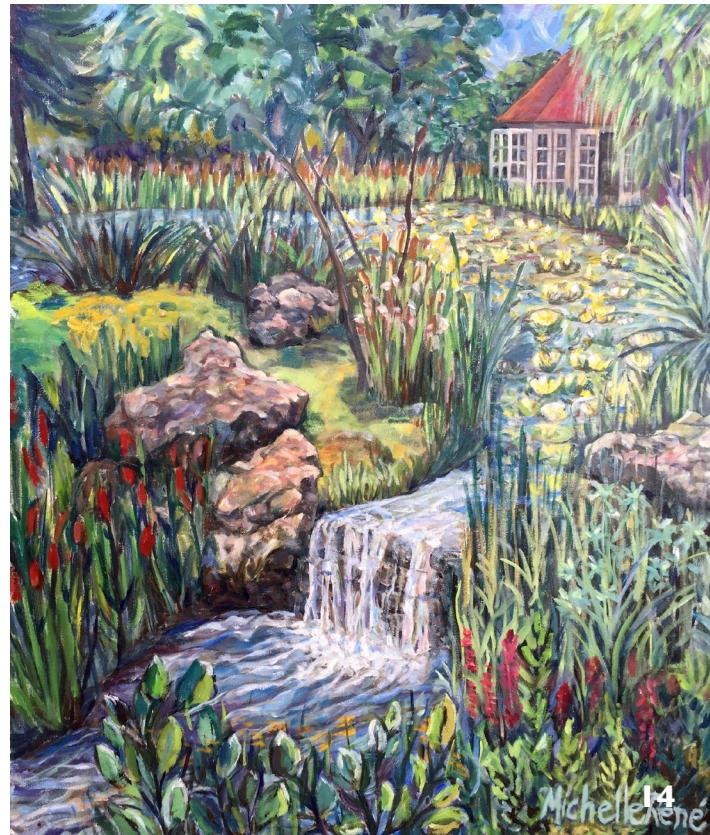
13



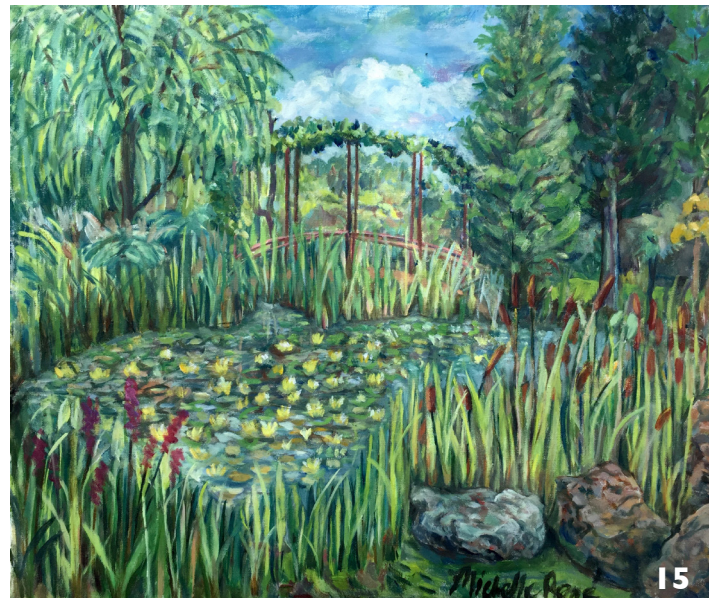
17



Painting in Provence, France



14



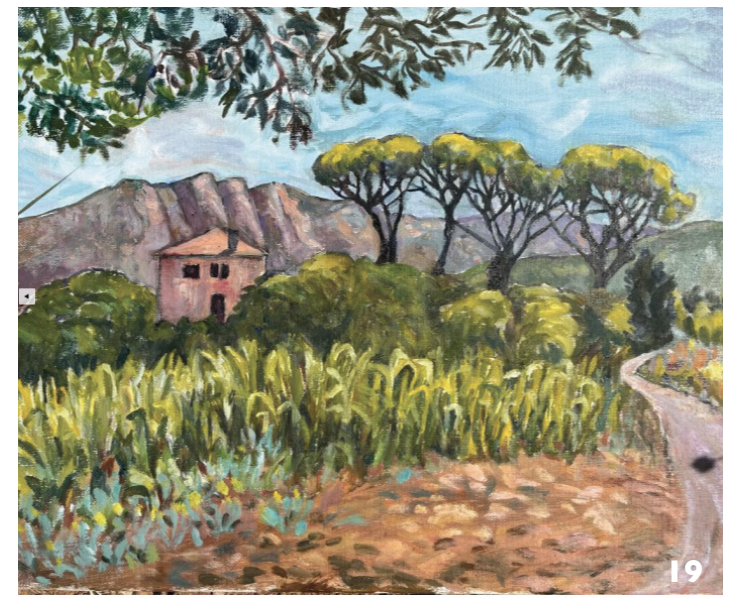
15



16



18



19

**13. Tuscany Serene Valley**

15" x 12" oil on board, Tuscany, Italy  
Artist-in-Residence, Borgo Santo Pietro  
Capturing the rolling hills and tranquility of the Tuscan countryside in the picturesque SereneValle

**14. Tuscany Studio**

24" x 18" oil on canvas, Tuscany, Italy  
Artist-in-Residence, Borgo Santo Pietro  
This is a view of Michelle René’s red-roofed studio, surrounded by Tuscan gardens, a peaceful lily pond, and a lovely waterfall.

**15. Tuscany Lily Pond**

20" x 16" oil on canvas, Tuscany, Italy  
Artist-in-Residence, Borgo Santo Pietro  
Michelle René drew daily inspiration from the stunning views of the lily pond, lively gardens, and charming bridge from her studio.

**16. Umbria Arch**

20" x 30" oil on canvas, Umbria, Italy  
During the two-month painting residency in Umbria, Italy, Michelle René painted this classic Italian arch on-site, using the vibrant colors and rich textures to capture the classic Italian architecture.

**17. Mont Sainte-Victoire**

22" x 18" oil on canvas, Aix-en-Provence, France  
While spending a summer as an Artist-in-Residence at the Leo Marchutz School of Painting and Drawing in Aix-en-Provence, France, Michelle René had the opportunity to paint Mont Sainte-Victoire, a beloved motif of Cézanne.

**18. Château Noir**

20" x 17" oil on canvas, Aix-en-Provence, France  
This painting provided a unique chance to paint within the secluded grounds of Château Noir, the home of renowned French artist Paul Cézanne. Michelle René employed expressive brushstrokes to capture the vast woodlands of this beautiful natural landscape.

**19. The Provence Studio**

20" x 17" oil on board, Aix-en-Provence, France  
This 18th-century farmhouse in Provence served as both a studio and a refuge from the long hours of painting under the intense Provençal sun. It is here that artists discover why the “Light of Provence” was so highly sought after by Impressionist painters.

## The New York Series



*During a six-week summer residency at the School of Visual Arts in New York City, Michelle René entered a key phase of experimentation in her painting practice. The residency marked a striking contrast to Michelle René's earlier experiences painting expansive landscapes in France, Spain, and Italy. New York's vertical architecture inspired and challenged her in unexpected ways.*

*Michelle René began with a traditional painting in Central Park but soon became captivated by the shifting light and geometry of the city's skyline. As she observed how light moved across glass and concrete surfaces throughout the day, she explored through her artistic lens how skyscrapers were transformed into dynamic planes of color, shadow, and perspective, leading to increasingly geometric compositions.*

## Michelle René Cobb: World Traveler, Visionary Artist, and Educator

Global Perspectives showcases over forty years of international travel and painting by acclaimed African American artist Michelle René Cobb. The exhibition features works created during Artist-in-Residence programs across Umbria and Tuscany in Italy, El Bruc in Spain, the Rhône Valley and Aix-en-Provence in France, Martha's Vineyard, and throughout West Africa, including Ghana, Togo, Nigeria, and Benin. Most recently, she completed a residency at the School of Visual Arts in New York City.

The exhibition reflects both Michelle René's global experiences and her conceptual exploration of perspective. Global Perspectives plays on the word's dual meaning—referring to the physical vantage points from which she has painted across continents, while also highlighting her ongoing investigations into perspective-based painting.

Michelle René's work is celebrated for capturing the atmosphere and local cultures through her vibrant use of color and energetic brushwork. Working primarily en plein air, she responds directly to light, atmosphere, and shifting environmental conditions. Her practice was shaped during a fifteen-year apprenticeship with master painter Edward Loper Sr., whose emphasis on color harmony and direct observation continues to influence her work. Her work continues to gain national recognition. Notably, Supreme Court Justice Ketanji Brown

Jackson acquired one of Michelle's works for her chambers. In addition, Stanford University acquired her graphic design portfolio for its Black Graphic Design Artists Initiative housed in Special Collections for use by students, faculty, and researchers from Stanford. For more than four decades, Michelle René has taught painting, drawing, and graphic design at institutions. At the University of Maryland she pioneered the first Computer Graphics program. She also taught at Delaware College of Art & Design, Lincoln University, the Metropolitan Museum of Art, the University of Delaware, and Georgetown Day School, where she chaired the Studio Art Department. Since 2012, she has served as an AP Studio Art Reader, evaluating thousands of portfolios globally.

Michelle René's art career began as a designer for *Time-Life Books* where she designed over 35 books. Later, as the first African American Art Director at *Sports Illustrated*, she spent more than ten years developing promotional campaigns for events including the Olympics, the Super Bowl, the Kentucky Derby, the NCAA, the Indianapolis 500, the World Series, and the NBA. She then established her own design firm in New York, collaborating with clients such as The City of New York, NCNW, CitiBank, Wynton Marsalis, and The Washington Post. She earned a Master of Fine Arts from George Washington University and a Bachelor of Science from Skidmore College.